

# DAMPERS

For ventilation of chemical process air





**Reduced assembly costs**  
thanks to perfectly fitting  
sockets or installation with  
a plug-in system



**Shaft Seal**

Adjustable While Installed



**Standard Console**

with Electric or Pneumatic  
Actuators



**Tightly Sealed Damper**

in Conformity with DIN EN 1751



**Manual Damper in 15° Increments  
or Continuous**

with Locking Screw and Graduated Collar



**Very high stiffness of the  
damper housing**

even at large diameters

Save up to

**30 %**

**on energy costs** thanks to  
flow-optimized moldings



**Reliability** and **safety** thanks  
to high-quality  
ventilation of aggressive  
process media



# Application Effect

- **Control** and **block** air currents

beck dampers are injection molded up to DN 315 and seamlessly mechanically formed from DN 355 onwards. Thanks to the latest production methods, variants from DN 450 onwards can even be produced without additional stiffening rings. The housing is designed to safely absorb even high negative pressure.

The housing with sockets is manufactured in a single work process. It is tension-free, ensures an accurate fit and reduces on-site assembly work to a minimum. The damper housing, shafts and damper blades are made of the chemically resistant thermoplastic materials PVC, PVC-UV, PP, PPs, PPs-el, PE and PVDF. In the tightly sealed design, which conforms with DIN EN 1751 (PVC, PVC-UV, PP, PPs, PPs-el), the seal of the damper blade opposite the housing is created by a sealing lip in a chemically resistant flexible material that is molded in place. This design is only used on the flange version for the purpose of ring stiffness.





# Product range

## Design

## Variants

## Portfolio

### Operation

---

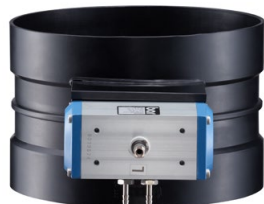


#### Manual

The manual dampers are available with continuous adjustment or in 15° increments. In the continuous variant, an additional third O-ring is installed to seal the shaft. This special feature allows adjustment of the seal while installed. The manual dampers of the 15°-increment variant engage via a spring-loaded adjustment button, while the continuous variants up to DN 400 are supplied with a graduated collar 0–90° and a stainless steel locking screw to lock the adjustment button in place. The manual dampers from DN 400 onwards have a two-handed grip for secure adjustment.

#### Electric & Pneumatic

The motor-powered dampers structurally correspond to the continuous series. The standardized motor consoles are compatible with all conventional pneumatic and electric actuators. Special consoles are available on request. Simply tell us the motor type and we will build the corresponding motor console for your damper.



### Damper Blade

---

The variants with a simple or reinforced damper blade have a limited thickness. Dampers with a tightly sealed damper blade, which have an additional elastomer seal molded around the circumference, fulfill the requirements of DIN EN 1751.



Simple



Reinforced



Tightly sealed in conformity with  
DIN EN 1751



## Components

---

Our dampers consist of a housing, drive shaft and precisely mounted damper blade. Depending on the required drive type – manual, electric or pneumatic – a specially designed drive shaft is installed. All dampers are optionally available with a socket or flange connection.

*"In case of  
any questions,  
contact me"*

**Denis Muracevic, Vertrieb**

Tel.: +49 69 380 353-12

Fax: +49 69 380 8243

dm@beck-gmbh.net



**Product range, variants and prices  
can be found in our price list.**



**PRICE LIST**



**beck Kunststoffverformungs GmbH**

Elektronstraße 58  
D-65933 Frankfurt/Main  
Tel.: +49 69 380 353-0  
Fax.: +49 69 380 8243  
info@beck-gmbh.net

[www.beck-gmbh.net](http://www.beck-gmbh.net)